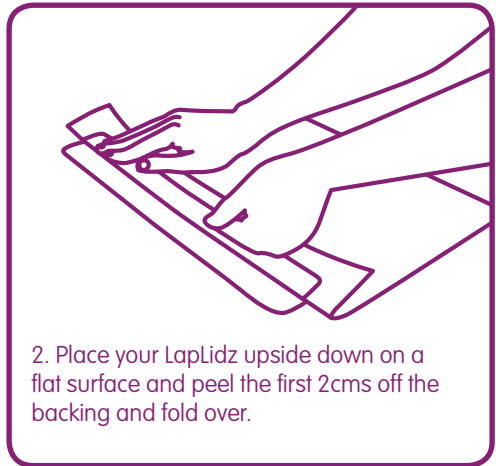




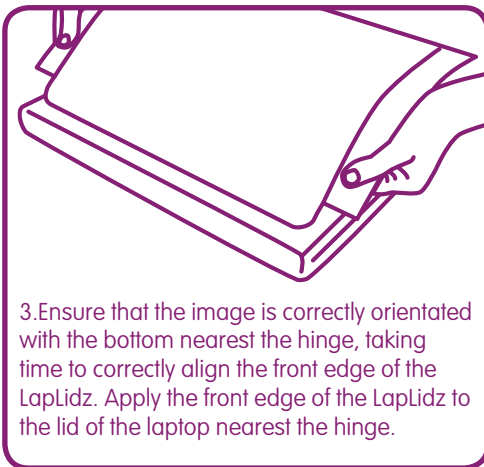
How to apply your LapLidz



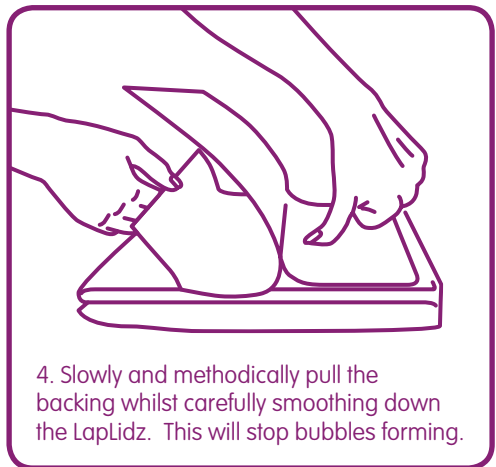
1. With the lid of your laptop closed, clean well ensuring the lid of your laptop is clean, dry and free of dust.



2. Place your LapLidz upside down on a flat surface and peel the first 2cms off the backing and fold over.



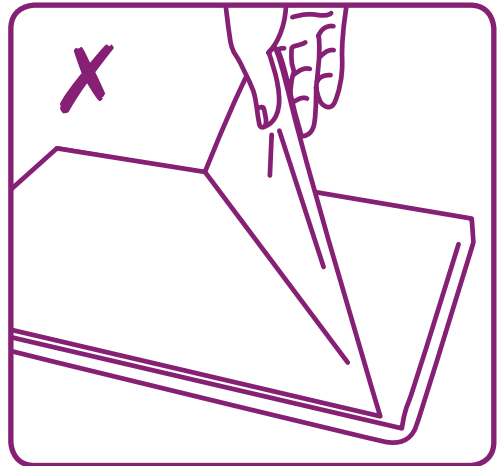
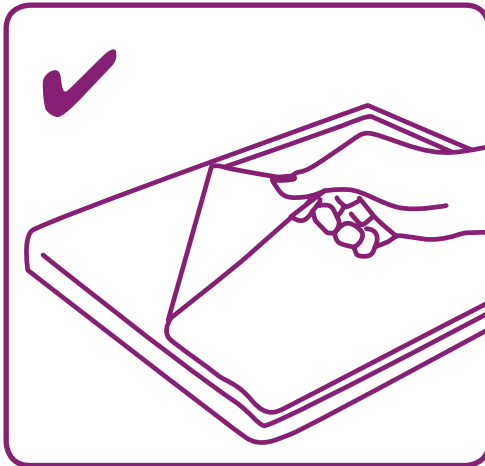
3. Ensure that the image is correctly orientated with the bottom nearest the hinge, taking time to correctly align the front edge of the LapLidz. Apply the front edge of the LapLidz to the lid of the laptop nearest the hinge.



4. Slowly and methodically pull the backing whilst carefully smoothing down the LapLidz. This will stop bubbles forming.



How to remove your LapLidz



Close the lid of your laptop. Peel off a corner and gently pull the LapLidz parallel to the laptop lid . Do not pull directly away from the lid and do not tug or jerk the LapLidz as this may result in tearing.

Once removed the LapLidz can be stored on the original backing.

Extra notes

Slight creasing of the backing is normal when you take it out of the packaging. This will disappear as you smooth out the LapLidz.

Take care to prevent the LapLidz sticking to itself.

If any bubbles appear just pull up the nearest edge and smooth away.

Best results are achieved if you take your time to apply the LapLidz.

For more LapLidz designs or to personalise your own LapLidz visit:

www.laplidz.co.uk

For general enquiries call 0871 8111411